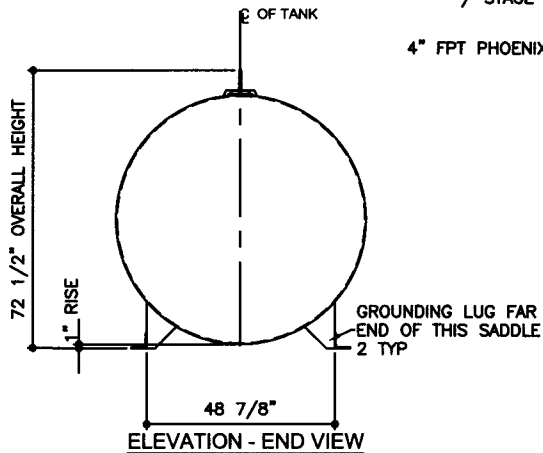
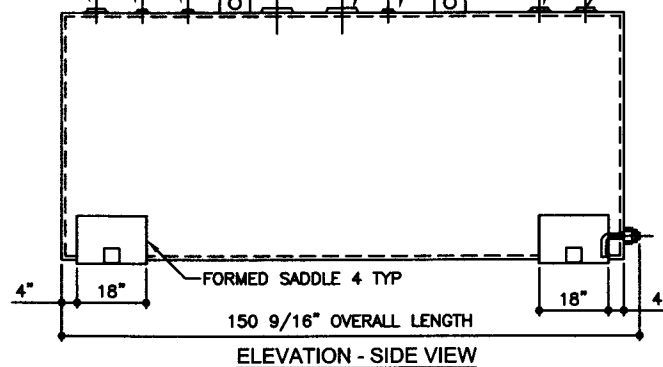


TOP VIEW

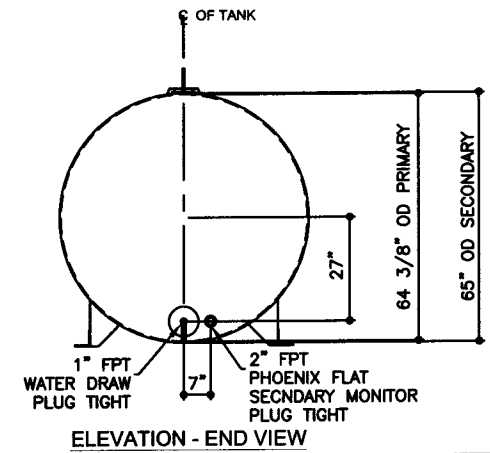
- 6" FPT PHOENIX CURVED SECONDARY EMERGENCY VENT
- 2" FPT PHOENIX FLAT / STICK / GAUGE / STAGE 1 VAPOR RECOVERY
- 6" FPT PHOENIX CURVED PRIMARY EMERGENCY VENT
- 2" FPT PHOENIX FLAT NORMAL VENT
- 2" FPT PHOENIX FLAT SPARE / STAGE 2 VAPOR RECOVERY
- 4" FPT PHOENIX CURVED PUMP / DISPENSER
- 4" FPT PHOENIX CURVED FILL
- 2" FPT PHOENIX FLAT / STICK / GAUGE / STAGE 1 VAPOR RECOVERY



ELEVATION - END VIEW



ELEVATION - SIDE VIEW



ELEVATION - END VIEW

TOLERANCES TANK CAPACITY -0% / +10 OVERALL LENGTH -0" / +2" OVERALL WIDTH -0" / +1" OVERALL HEIGHT -1/2" / +1/2" OTHER DIMENSIONS -1/4" / +1/4"		UL 142 (BUILT & LABELED) HOLDDOWNS ARE SEISMIC RATED DOUBLE WALL TANK SADDLE TANK		STEEL: ASTM A36 PRIMARY TANK SHELL: 6 GAUGE (3/16") HEAD: 6 GAUGE (3/16")		COATING: "R" EXTERIOR COATING, ACE 1A RED SHOP COAT 1-3 MILS "A" EXTERIOR ACE 3A COATING: SP-6 GRIT BLAST 3A COLOR: #WH01 (WHITE) 1 CT TN-161 EPOXY 3.0-5.0 MILS 1 CT TN-74 URETHANE 2.0-3.0 MILS TDFT 5.0-8.0 MILS		SPECIAL INSTRUCTIONS PLUG TIGHT WRENCH PLUG TIGHT WITH PIPE DOPE ON THREADS AND TESTED LEAK FREE.		APPROXIMATE SHIPPING WEIGHT 3,720 LBS. TANK VENT CAPACITY 211,000 PRIMARY TANK 211,000 SECONDARY TANK		DRW BY - REV No 1 SHEET 2 OF -
1-206-281-5000 AceSaddleLite II - 2,000 GALLON		SECONDARY TANK SHELL: 10 GAUGE (9/64") HEAD: 6 GAUGE (3/16")		INTERIOR: BARE STEEL		ACE HOUSE PAPER No. - ENG. FILE No. - JOB ID No. - 01-01-02 SUPERCEDES 09-01-01		ACE PART No. AC02000U2S4 QTY: 1 (F:111ACSHOPISADDLEU2S402000U2-ORTH.GCD-1:32)		Acetank & Equipment COPYRIGHT 1997 ACE TANK & EQUIPMENT		