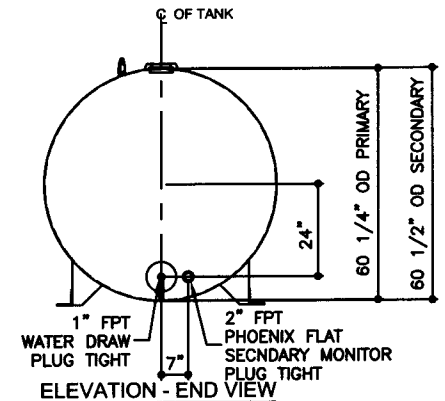
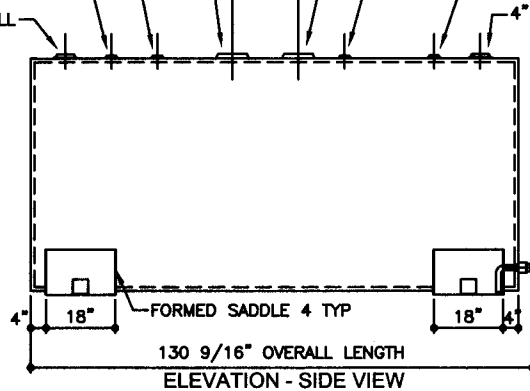
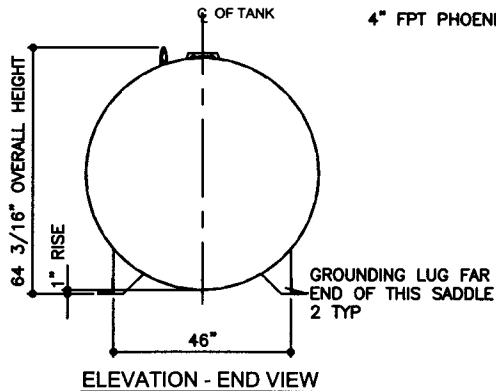


TOP VIEW

- 6" FPT PHOENIX CURVED SECONDARY EMERGENCY VENT
- 2" FPT PHOENIX FLAT STICK/GAUGE /STAGE 1 VAPOR RECOVERY
- 2" FPT PHOENIX FLAT STICK/GAUGE /STAGE 1 VAPOR RECOVERY
- 4" FPT PHOENIX CURVED FILL
- 6" FPT PHOENIX CURVED PRIMARY EMERGENCY VENT
- 2" FPT PHOENIX FLAT NORMAL VENT
- 2" FPT PHOENIX FLAT SPARE/STAGE 2 VAPOR RECOVERY
- 4" FPT PHOENIX CURVED PUMP/DISPENSER



TOLERANCES

TANK	
CAPACITY	-0% / +10
OVERALL LENGTH	-0" / +2"
OVERALL WIDTH	-0" / +1"
OVERALL HEIGHT	-1/2" / +1/2"
OTHER DIMENSIONS	-1/4" / +1/4"

UL 142 (BUILT & LABELED)
HOLDDOWNS ARE SEISMIC RATED
DOUBLE WALL TANK
SADDLE TANK

STEEL: ASTM A36
PRIMARY TANK
SHELL: 6 GAUGE (3/16")
HEAD: 6 GAUGE (3/16")

COATING:
"R" EXTERIOR COATING, ACE 1A
RED SHOP COAT 1-3 MILS
"A" EXTERIOR ACE 3A COATING:
SP-6 GRIT BLAST
3A COLOR: #WH01 (WHITE)
1 CT TN-161 EPOXY 3.0-5.0 MILS
1 CT TN-74 URETHANE 2.0-3.0 MILS
TDFT 5.0-8.0 MILS

SPECIAL INSTRUCTIONS
PLUG TIGHT
WRENCH PLUG TIGHT WITH PIPE DOPE
ON THREADS AND TESTED LEAK FREE.

APPROXIMATE SHIPPING WEIGHT
3,090 LBS.

TANK VENT CAPACITY
168,000 PRIMARY TANK

168,000 SECONDARY TANK

JOB ID No. ACE HOUSE PAPER No. ENG. FILE No.

01-01-02 SUPERCEDES 09-01-01

AceSaddleLite II - 1,500 GALLON

ACE PART No. AC01500U2S4 QTY: 1

SECONDARY TANK
SHELL: 10 GAUGE (9/64")
HEAD: 10 GAUGE (9/64")

INTERIOR:
BARE STEEL

DRW BY
REV No
1
SHEET
2
OF



(F:111)ACSHOPISADDLEU2S410150012-ORTHR.GCD-1:32