

TOP VIEW

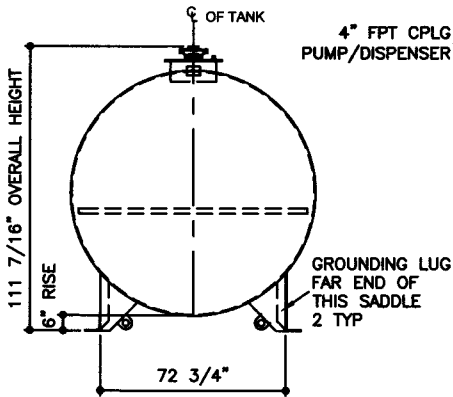
4" FPT CPLG SPARE/
STAGE 2 VAPOR RECOVERY

3" FPT CPLG
NORMAL VENT/
STAGE 1 VAPOR RECOVERY

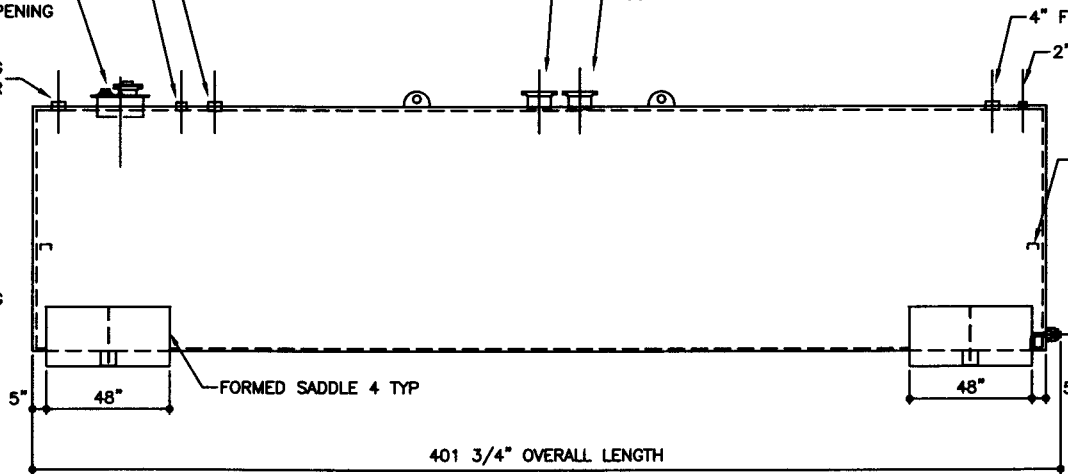
18" ID PRODUCT FILL MANHOLE
3" FPT FILL OPENING
3/4" FPT RETURN
4" FPT INSPECTION OPENING

PRIMARY TANK EMERGENCY VENT
8" 150# RF SLIP-ON FLANGE
SCH 40 X 7" LONG PIPE

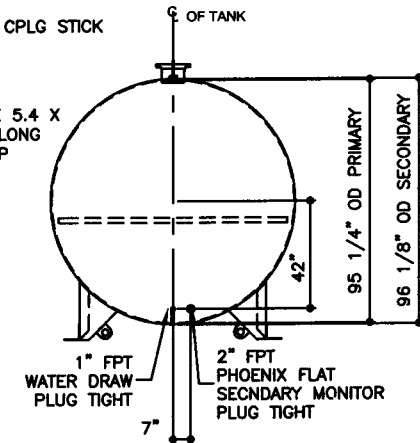
SECONDARY EMERGENCY VENT
8" 150# RF SLIP-ON FLANGE
SCH 40 X 7" LONG PIPE



ELEVATION - END VIEW



ELEVATION - SIDE VIEW



ELEVATION - END VIEW

TOLERANCES

TANK	
CAPACITY	-0% / +10
OVERALL LENGTH	0" / +2"
OVERALL WIDTH	0" / +1"
OVERALL HEIGHT	-1/2" / +1/2"
OTHER DIMENSIONS	-1/4" / +1/4"

UL 142 (BUILT & LABELED)
HOLDDOWNS ARE SEISMIC RATED
DOUBLE WALL TANK
SADDLE TANK

STEEL: ASTM A36
PRIMARY TANK
SHELL: 2 GAUGE (1/4")
HEAD: 2 GAUGE (1/4")

COATING:
"R" EXTERIOR COATING, ACE 1A
RED SHOP COAT 1-3 MILS

"A" EXTERIOR ACE 3A COATING:
SP-6 GRIT BLAST
3A COLOR: #WH01 (WHITE)
1 CT TN-161 EPOXY 3.0-5.0 MILS
1 CT TN-74 URETHANE 2.0-3.0 MILS
TDFT 5.0-8.0 MILS

SPECIAL INSTRUCTIONS

PLUG TIGHT
WRENCH PLUG TIGHT WITH PIPE DOPE
ON THREADS AND TESTED LEAK FREE.

APPROXIMATE SHIPPING WEIGHT

18,410 LBS.

TANK VENT CAPACITY
428,000 PRIMARY TANK

428,000 SECONDARY TANK

ACE HOUSE PAPER No. - ENG. FILE No. -

01-01-02 SUPERCEDES 09-01-01

DRW BY -
REV No 1
SHEET 2
OF

AceSaddleLite II - 12,000 GALLON

ACE PART No. AC12000U2S4 QTY: 1

(F:111ACSHOP\SADDLE\U2S4\12000\2-ORTH.GCD-1:48)



1-206-281-5000
COPYRIGHT 1987 ACE TANK & EQUIPMENT