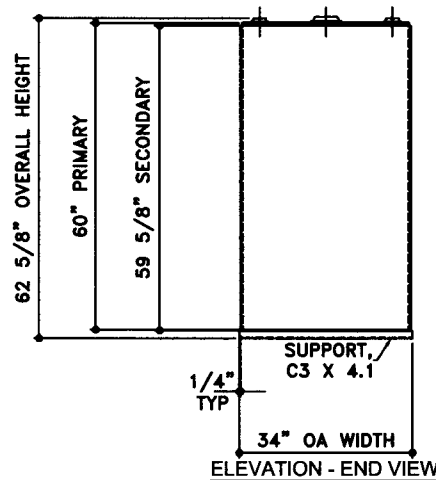
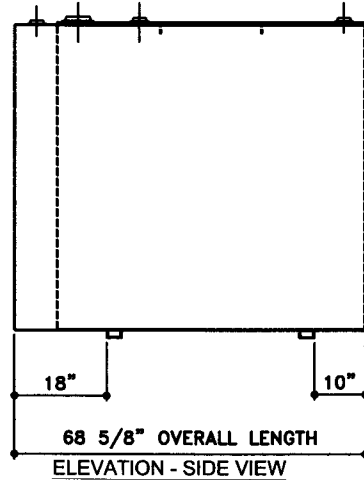
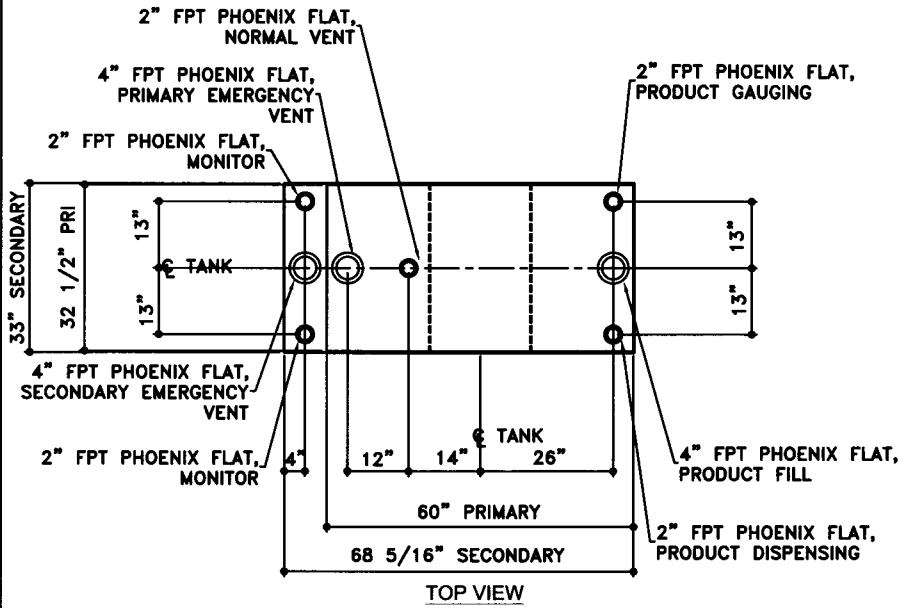


NOTE:  
 ALL TANK DIMENSIONS ARE INSIDE TO INSIDE EXCEPT FOR  
 SECONDARY HEIGHT DIMENSIONS ARE INSIDE BOTTOM TO TOP OF WALL



TOLERANCES	
TANK	
CAPACITY	-0% / +10
OVERALL LENGTH	-0" / +1/2"
OVERALL WIDTH	-0" / +1/2"
OVERALL HEIGHT	-0" / +1/2"
OTHER DIMENSIONS	-1/4" / +1/4"

1-206-281-5000

COPYRIGHT 1997 ACE TANK & EQUIPMENT

<b>UL 142 (BUILT &amp; LABELED)</b> DOUBLE WALL TANK RECTANGLE TANK SEISMIC ZONE 4	
<h2>AceCube - 500 GALLON</h2>	
ACE PART No.	AC00500U2R1
QTY:	1
(F:111ACSHOPRECTANGLU2R1100500U2-ORTH.GCD-1:24)	

<b>STEEL: ASTM A36</b> PRIMARY TANK TOP: 10 GAUGE (9/64") SIDES: 10 GAUGE (9/64") ENDS: 12 GAUGE (7/64") BOTTOM: 10 GAUGE (9/64") SECONDARY TANK TOP: 12 GAUGE (7/64") SIDES: 10 GAUGE (9/64") ENDS: 12 GAUGE (7/64") BOTTOM: 12 GAUGE (7/64")
--

<b>COATING:</b> "R" EXTERIOR COATING, ACE 1A RED SHOP COAT 1-3 MILS "G" EXTERIOR COATING, ACE 1E GRAY SHOP COAT 1-3 MILS INTERIOR: BARE STEEL
---

<b>SPECIAL INSTRUCTIONS</b> PLUG TIGHT WRENCH PLUG TIGHT WITH PIPE DOPE ON THREADS AND TESTED LEAK FREE.
---

<b>APPROXIMATE SHIPPING WEIGHT</b> 1,160 LBS.	DRAW BY - REV No 1 SHEET 2 OF -
<b>TANK VENT CAPACITY</b> 94,800 PRIMARY 105,000 SECONDARY	JOB ID No. - ACE HOUSE PAPER No. - ENG. FILE No. - 01-01-02 SUPERCEDES 09-01-01