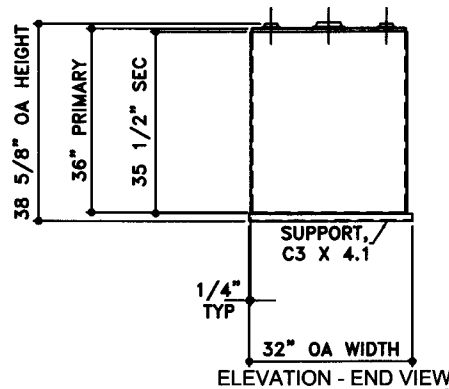
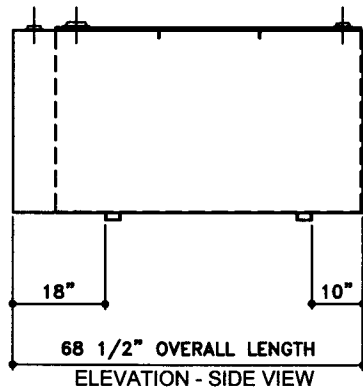
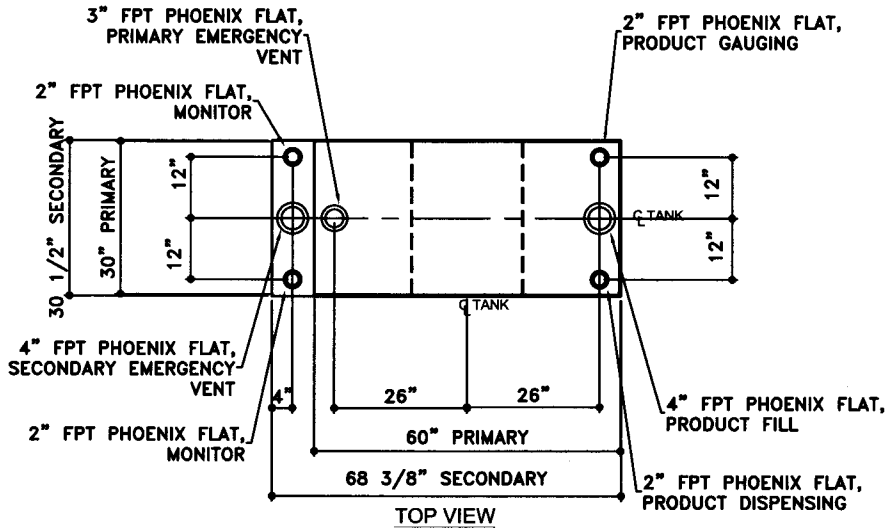


NOTE:  
 ALL TANK DIMENSIONS ARE INSIDE TO INSIDE EXCEPT FOR  
 SECONDARY HEIGHT DIMENSIONS ARE INSIDE BOTTOM TO TOP OF WALL



TOLERANCES	
TANK	
CAPACITY	-0% / +10
OVERALL LENGTH	-0' / +1/2"
OVERALL WIDTH	-0' / +1/2"
OVERALL HEIGHT	-0' / +1/2"
OTHER DIMENSIONS	-1/4" / +1/4"
1-206-281-5000	

UL 142 (BUILT & LABELED) DOUBLE WALL TANK RECTANGLE TANK	
<b>AceCube - 280 GALLON</b>	
ACE PART No.	AC00280U2R1
QTY:	1
(F:11ACSHOP\RECTANGL\U2R1\00280\2-ORTHO.GCD-1:16)	

STEEL: ASTM A36
PRIMARY TANK
TOP: 10 GAUGE (9/64")
SIDES: 12 GAUGE (7/64")
ENDS: 12 GAUGE (7/64")
BOTTOM: 10 GAUGE (9/64")
SECONDARY TANK
TOP: 12 GAUGE (7/64")
SIDES: 12 GAUGE (7/64")
ENDS: 12 GAUGE (7/64")
BOTTOM: 12 GAUGE (7/64")

COATING:
"R" EXTERIOR COATING, ACE 1A RED SHOP COAT 1-3 MILS
"G" EXTERIOR COATING, ACE 1E GRAY SHOP COAT 1-3 MILS
INTERIOR: BARE STEEL

SPECIAL INSTRUCTIONS
PLUG TIGHT WRENCH PLUG TIGHT WITH PIPE DOPE ON THREADS AND TESTED LEAK FREE.

APPROXIMATE SHIPPING WEIGHT:	700 LBS.	
TANK VENT CAPACITY	63,200 PRIMARY 73,700 SECONDARY	
JOB ID No.	ACE HOUSE PAPER No.	ENG. FILE No.
-	-	-
01-01-02 SUPERCEDES 09-01-01		

DRW BY	-
REV No	1
SHEET	2
OF	OF

