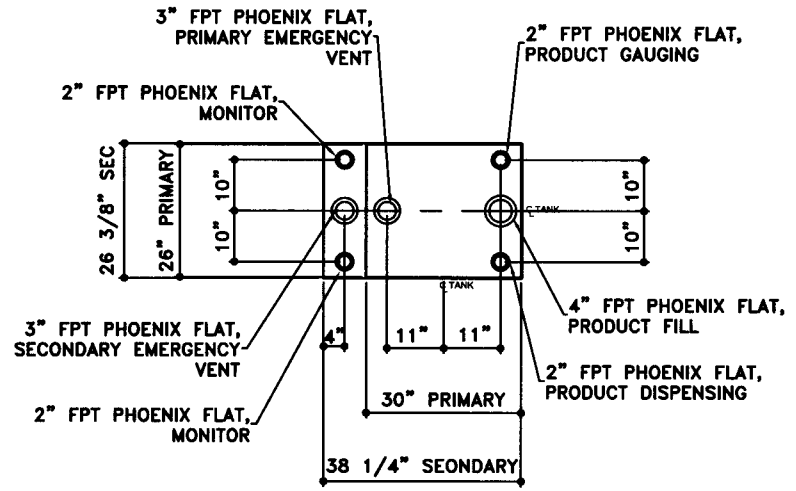
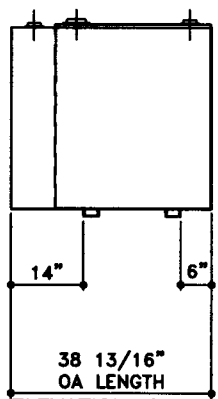


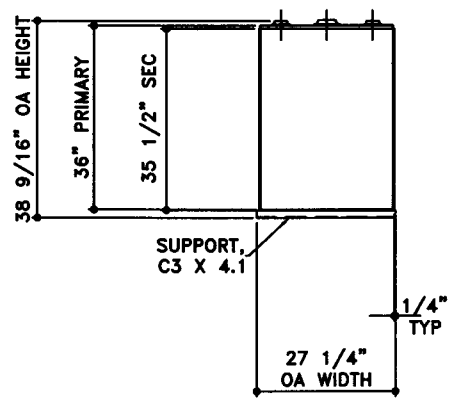
NOTE:  
 ALL TANK DIMENSIONS ARE INSIDE TO INSIDE EXCEPT FOR  
 SECONDARY HEIGHT DIMENSIONS ARE INSIDE BOTTOM TO TOP OF WALL



TOP VIEW



ELEVATION - SIDE VIEW



ELEVATION - END VIEW

TOLERANCES	
TANK	
CAPACITY	-0% / +10
OVERALL LENGTH	-0" / +1/2"
OVERALL WIDTH	-0" / +1/2"
OVERALL HEIGHT	-0" / +1/2"
OTHER DIMENSIONS	-1/4" / +1/4"

UL 142 (BUILT & LABELED)  
 DOUBLE WALL TANK  
 RECTANGLE TANK

STEEL: ASTM A36  
 PRIMARY TANK  
 TOP: 12 GAUGE (7/64")  
 SIDES: 12 GAUGE (7/64")  
 ENDS: 12 GAUGE (7/64")  
 BOTTOM: 12 GAUGE (7/64")  
 SECONDARY TANK  
 TOP: 12 GAUGE (7/64")  
 SIDES: 12 GAUGE (7/64")  
 ENDS: 12 GAUGE (7/64")  
 BOTTOM: 12 GAUGE (7/64")

COATING:  
 "R" EXTERIOR COATING, ACE 1A  
 RED SHOP COAT 1-3 MILS  
 "G" EXTERIOR COATING, ACE 1E  
 GRAY SHOP COAT 1-3 MILS

SPECIAL INSTRUCTIONS  
 PLUG TIGHT  
 WRENCH PLUG TIGHT WITH PIPE DOPE  
 ON THREADS AND TESTED LEAK FREE.

APPROXIMATE SHIPPING WEIGHT  
 400 LBS.  
 TANK VENT CAPACITY  
 42,100 PRIMARY  
 42,100 SECONDARY



**AceCube - 120 GALLON**

ACE PART No. AC00120U2R1 QTY: 1

(F:111)ACSHOPIRECTANGLU2R1001202-ORTHO.GCD-1:16)

INTERIOR:  
 BARE STEEL

DRW BY -  
 REV No 1  
 SHEET 2 OF

JOB ID No. - ACE HOUSE PAPER No. - ENG. FILE No. -

01-01-02 SUPERCEDES 09-01-01

APPROXIMATE SHIPPING WEIGHT  
 400 LBS.  
 TANK VENT CAPACITY  
 42,100 PRIMARY  
 42,100 SECONDARY