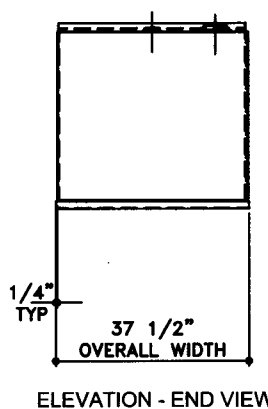
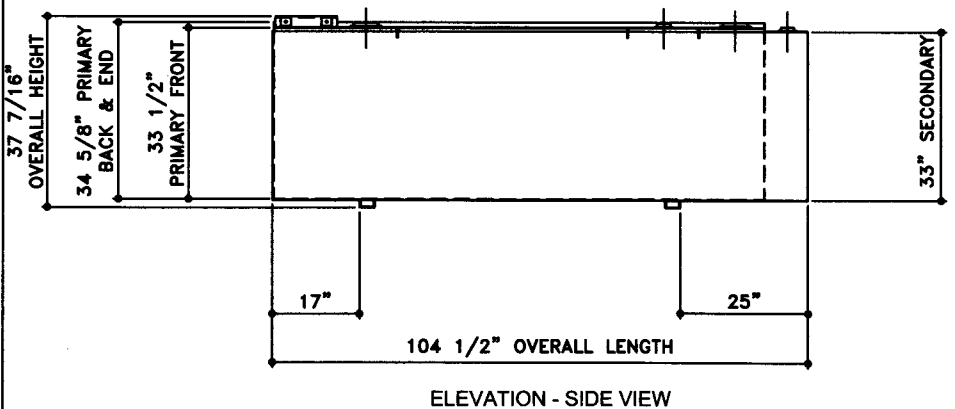
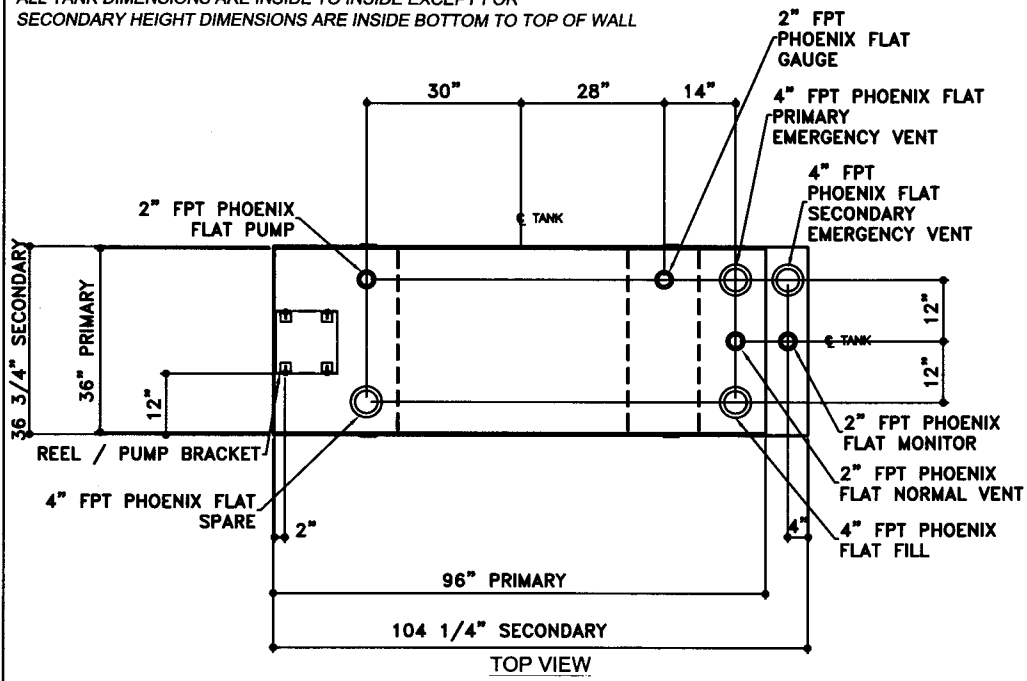


NOTE:  
 ALL TANK DIMENSIONS ARE INSIDE TO INSIDE EXCEPT FOR  
 SECONDARY HEIGHT DIMENSIONS ARE INSIDE BOTTOM TO TOP OF WALL



TOLERANCES	
TANK	
CAPACITY	-0% / +10
OVERALL LENGTH	-0\"/>

UL 142 (BUILT & LABELED)  
 DOUBLE WALL TANK  
 RECTANGLE TANK

TANK  
 PRIMARY TANK:  
 TOP: 10 GAUGE (9/64)  
 SIDE WALL: 6 GAUGE (3/16)  
 END WALL: 12 GAUGE (7/64)  
 BOTTOM: 10 GAUGE (9/64)

COATING:  
 \*G\* EXTERIOR COATING, ACE 1E  
 LIGHT GRAY SHOP COAT 1-3 MILS  
 \*A\* EXTERIOR ACE 3A COATING:  
 SP-6 GRIT BLAST  
 3A COLOR: #WH01 (WHITE)  
 1 CT TN-161 EPOXY 3.0-5.0 MILS  
 1 CT TN-74 URETHANE 2.0-3.0 MILS  
 TDFT 5.0-8.0 MILS

SPECIAL INSTRUCTIONS  
 PLUG TIGHT  
 WRENCH PLUG TIGHT WITH PIPE DOPE  
 ON THREADS AND TESTED LEAK FREE.

APPROXIMATE SHIPPING WEIGHT:  
 1,050 LBS.  
 TANK VENT CAPACITY  
 94,800 PRIMARY TANK  
 105,800 SECONDARY TANK



**Ace BenchTop - 500 GALLON**

ACE PART No. AC00500U2R3 QTY: 1

(F:111)ACSHOPIRECTANGLIUR310050012-ORTH.GCD-1:16)

SECONDARY TANK:  
 TOP: 10 GAUGE (9/64)  
 SIDE WALL: 6 GAUGE (3/16)  
 END WALL: 12 GAUGE (7/64)  
 BOTTOM: 10 GAUGE (9/64)

INTERIOR:  
 BARE STEEL

JOB ID No.	ACE HOUSE PAPER No.	ENG. FILE No.
-	-	-
01-01-02 SUPERCEDES 09-01-01		

DRW BY -  
 REV No 1  
 SHEET 2  
 OF