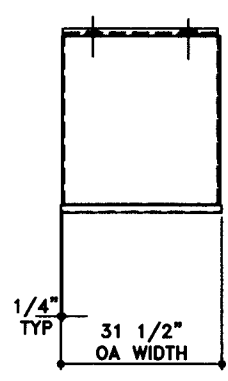
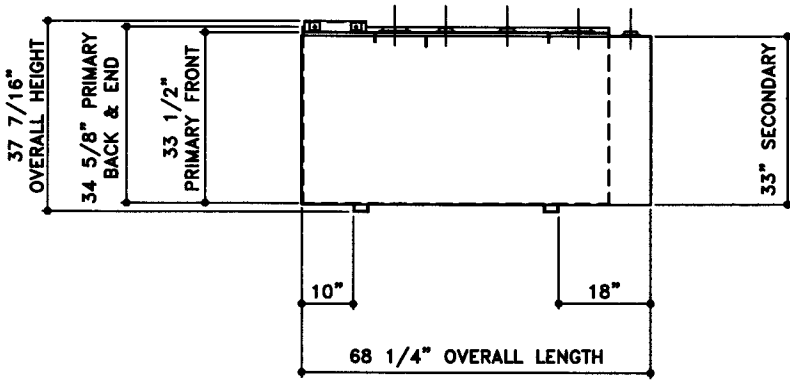
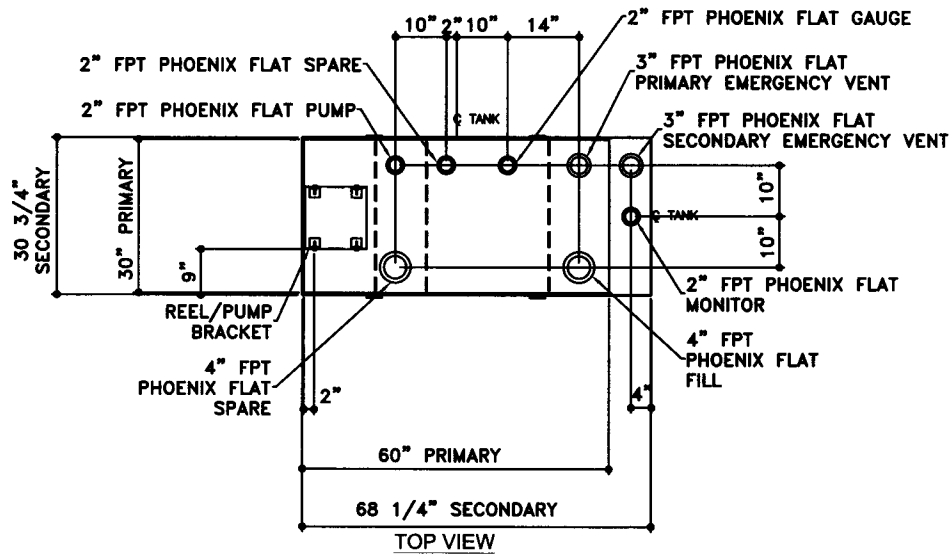


NOTE:
 ALL TANK DIMENSIONS ARE INSIDE TO INSIDE EXCEPT FOR
 SECONDARY HEIGHT DIMENSIONS ARE INSIDE BOTTOM TO TOP OF WALL



ELEVATION - SIDE VIEW

ELEVATION - END VIEW

TOLERANCES TANK CAPACITY -0% / +10 OVERALL LENGTH -0" / +1/2" OVERALL WIDTH -0" / +1/2" OVERALL HEIGHT -0" / +1/2" OTHER DIMENSIONS -1/4" / +1/4" 1-206-281-5000		UL 142 (BUILT & LABELED) DOUBLE WALL TANK RECTANGLE TANK		STEEL: ASTM A36 PRIMARY TANK: TOP: 10 GAUGE (9/64) SIDE WALL: 12 GAUGE (7/64) END WALL: 12 GAUGE (7/64) BOTTOM: 10 GAUGE (9/64) SECONDARY TANK: TOP: 12 GAUGE (7/64) SIDE WALL: 12 GAUGE (7/64) END WALL: 12 GAUGE (7/64) BOTTOM: 12 GAUGE (7/64)		COATING: "G" EXTERIOR COATING, ACE 1E LIGHT GRAY SHOP COAT 1-3 MILS "A" EXTERIOR ACE 3A COATING: SP-6 GRIT BLAST 3A COLOR: #WH01 (WHITE) 1 CT TN-161 EPOXY 3.0-5.0 MILS 1 CT TN-74 URETHANE 2.0-3.0 MILS TDFT 5.0-8.0 MILS INTERIOR: BARE STEEL		SPECIAL INSTRUCTIONS PLUG TIGHT WRENCH PLUG TIGHT WITH PIPE DOPE ON THREADS AND TESTED LEAK FREE.		APPROXIMATE SHIPPING WEIGHT 590 LBS. TANK VENT CAPACITY 63,200 PRIMARY 63,200 SECONDARY		DRW BY - REV No 1 SHEET 2 OF
Ace tank & EQUIPMENT 1-206-281-5000 Acetank & EQUIPMENT COPYRIGHT 1997 ACE TANK & EQUIPMENT		Ace BenchTop - 250 GALLON ACE PART No. AC00250U2R3 QTY:		(F.1111ACSHOPRECTANGLIUR310025012-ORTHO.GCD-1:16)		JOB ID No. - ACE HOUSE PAPER No. - ENG. FILE No. - 01-01-02 SUPERCEDES 09-01-01						