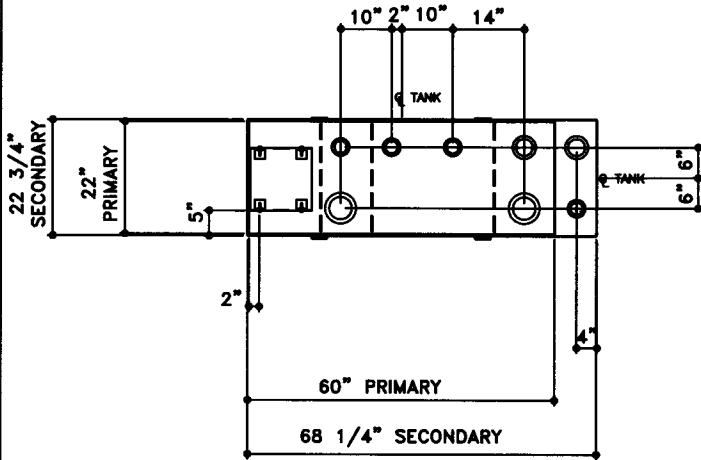
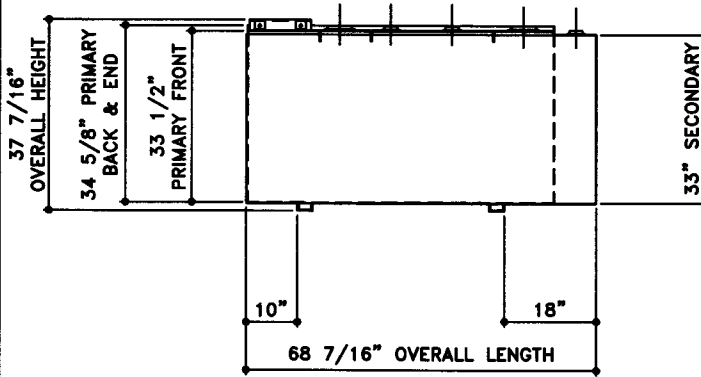


NOTE:  
 ALL TANK DIMENSIONS ARE INSIDE TO INSIDE EXCEPT FOR  
 SECONDARY HEIGHT DIMENSIONS ARE INSIDE BOTTOM TO TOP OF WALL



TOP VIEW



ELEVATION - SIDE VIEW



ELEVATION - END VIEW

TOLERANCES	
TANK	
CAPACITY	-0% / +10
OVERALL LENGTH	-0" / +1/2"
OVERALL WIDTH	-0" / +1/2"
OVERALL HEIGHT	-0" / +1/2"
OTHER DIMENSIONS	-1/4" / +1/4"

UL 142 (BUILT & LABELED)  
 DOUBLE WALL TANK  
 RECTANGLE TANK

STEEL: ASTM A36  
 PRIMARY TANK:  
 TOP: 10 GAUGE (9/64)  
 SIDE WALL: 12 GAUGE (7/64)  
 END WALL: 12 GAUGE (7/64)  
 BOTTOM: 10 GAUGE (9/64)

COATING:  
 "G" EXTERIOR COATING, ACE 1E  
 GRAY SHOP COAT 1-3 MILS  
 "A" EXTERIOR ACE 3A COATING:  
 SP-6 GRIT BLAST  
 3A COLOR: #WH01 (WHITE)  
 1 CT TN-161 EPOXY 3.0 -5.0 MILS  
 1 CT TN-74 URETHANE 2.0 -3.0 MILS  
 TDFT 5.0 -8.0 MILS

SPECIAL INSTRUCTIONS  
 PLUG TIGHT  
 WRENCH PLUG TIGHT WITH PIPE DOPE  
 ON THREADS AND TESTED LEAK FREE.

APPROXIMATE SHIPPING WEIGHT:  
 505 LBS  
 TANK VENT CAPACITY  
 52,700 PRIMARY  
 63,200 SECONDARY

DRW BY -  
 REV No 1  
 SHEET 2  
 OF



**Ace BenchTop - 180 GALLON**

ACE PART No. AC00180U2R3 QTY: 1  
 (F:111ACSHOPIRECTANGLIUR2R3I00180I2-ORTH.GCD-1:18)

SECONDARY TANK:  
 TOP: 12 GAUGE (7/64)  
 SIDE WALL: 12 GAUGE (7/64)  
 END WALL: 12 GAUGE (7/64)  
 BOTTOM: 12 GAUGE (7/64)

INTERIOR:  
 BARE STEEL

JOB ID No. - ACE HOUSE PAPER No. - ENG. FILE No. -

01-01-02 SUPERCEDES 09-01-01